

NEXUS WALL

CABINET

ASSEMBLY

**Also applies to: Galaxy,
Nexus, Ridgeline,
Statesman, and
Waterford Series**



NEXUS SERIES CABINETS

STANDARD WALL ASSEMBLY INSTRUCTIONS



Also applies to: Galaxy Series, Nexus Series, Ridgeline Series, Statesman Series, and Waterford Series

FOR YOUR INFORMATION:

These assembly instructions serve as a general guideline for *most* wall cabinets. While the assembly method is basically consistent across cabinet types, the sizes, configurations, number of shelves, and number of doors may vary.

WHAT YOU WILL NEED:

- brad nail gun
- screw gun (drill)
- wood glue
- rubber mallet
- safety glasses

BEFORE YOU BEGIN:

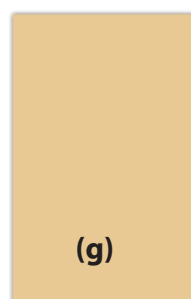
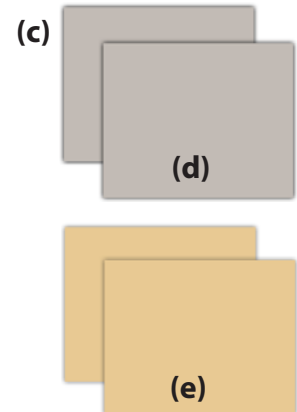
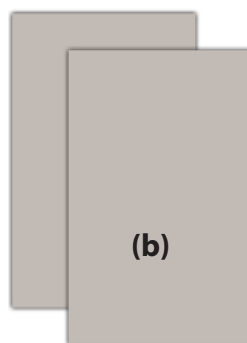
Use a protected surface to work on to prevent scratches on the cabinet. Cardboard surfaces work well.

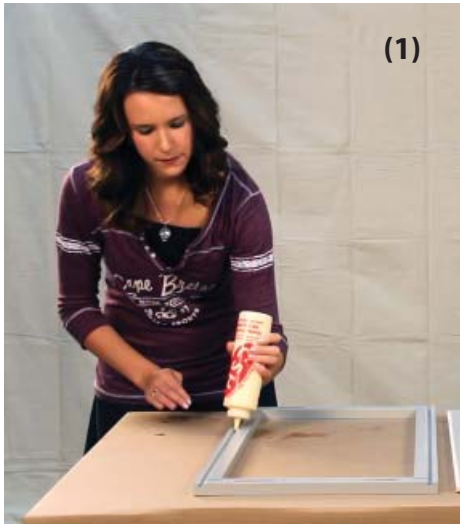
A. UNPACKING THE BOX

Unpack the contents from the Fabuwood box. The following parts may vary.

- (a) face frame
- (b) side panels
- (c) top board
- (d) bottom board
- (e) shelf (or shelves) *
- (f) cabinet door(s) *
- (g) back panel
- (h) box of hardware

* varies, depending on cabinet type





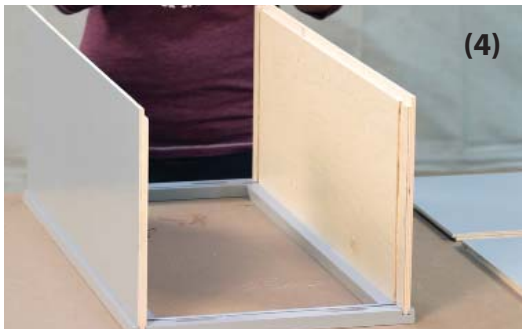
B. SLIDING IN THE SIDE PANELS

1. With the face frame lying face down on the protected surface, run a modest bead of glue in the dovetailed channel.

2. Slide the side panel into the groove you just glued. Be sure that the finished side is facing outside. Remove excess glue.

This is the sliding dovetail that does not require other fasteners and provides a solid joint between the cabinet sides and the face frame.

3. Hold the frame steady. Using a rubber mallet, tap the side panel so the top and bottom are flush with the face frame.



4. Repeat steps 1 - 3 for assembling the other side panel. Both side panels in this kit are interchangeable. When both sides are assembled, your cabinet should look like this (*shown at left*).

C. SLIDING IN THE TOP AND BOTTOM PANELS

Top and bottom panels are also interchangeable.

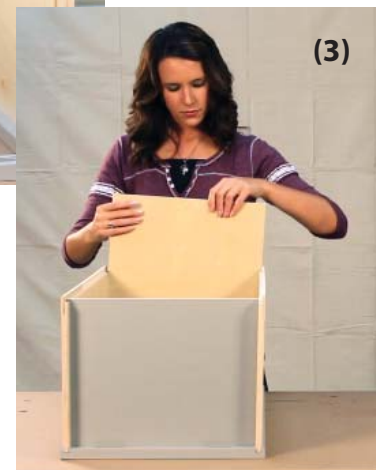
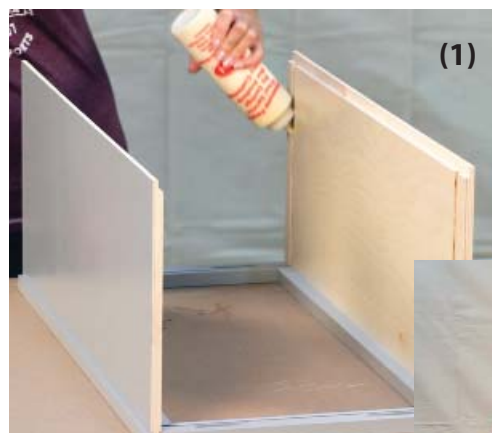
1. Apply glue in the grooves that will hold the panel in place (*shown at right*).

2. Ensure that the finished side is facing outside.

3. Slide one panel down so that the "lip" of the panel fits into the groove on the face frame.

4. Repeat steps 1 - 3 for the second panel.

5. Remove excess glue.

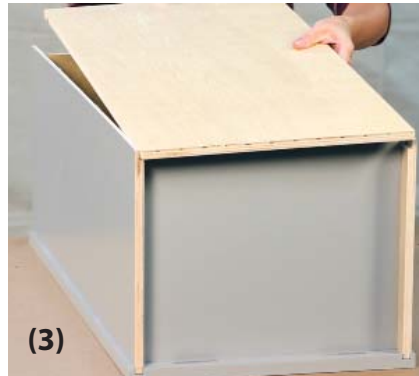




(1)

D. FASTENING THE BACK PANEL

1. Apply glue to the two grooves on the back panel.
2. Apply a bead of glue onto the notched edges of both side panels.



(3)

3. Place the back panel into place, lining up the grooves of the back panel with the top and bottom panel edges.

4. Using Phillips screws provided, fasten the back panel onto the top and bottom panels.

5. Remove excess glue.



(2)

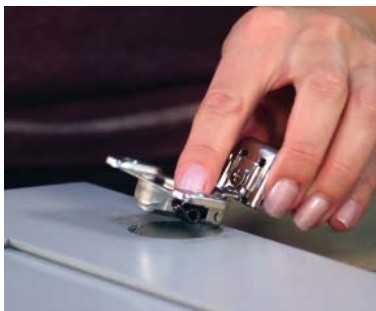
E. INSTALLING WOOD CORNER BLOCKS

This kit comes with several wooden blocks - half for top and half for bottom, depending on the type of cabinet. These blocks provide support and stability for the cabinet.

1. Place a wooden block on the corner of the side and top panels. Slide it up against the back panel.
2. Using a brad nailer (with 5/8" or 3/4" brads), nail this block to the side and top panels. Be careful not to nail through the side panel.
3. Repeat steps 1 - 2 for the second wooden block.
4. Turn the cabinet around 180 degrees, and repeat steps 1 - 3 for the remaining wooden blocks.



(2)



F. FASTENING DOOR HINGES

The cabinet door comes with pre-drilled cup holes to install the hinges into. Each cup hole has a pair of pre-drilled pilot holes for the mounting screws.

1. Place the cabinet door face-down on your workbench.
2. Insert a hinge into one of the cup holes in the door.
3. Using a pair of Phillips screws, mount the hinge onto the door.
4. Repeat steps 1 - 3 for the remaining cup holes.



The cabinet door does not have a "top" or a "bottom", which means it can be hung as either a left or a right-hinged door.



G. HANGING THE CABINET DOOR

Determine whether a left-hinged or a right-hinged door is desired.

1. Screw each hinge to the face frame of the cabinet, using the pre-drilled holes as a guide.

The hinges can be adjusted by the installer to ensure that the doors are straight.

H. ADDING SHELVES

This kit comes with 4 shelf supports (pins) for each shelf. Some wall cabinets have no shelves, some vary between 1 - 3 shelves.

1. Insert the pins into desired holes inside the cabinet.

2. Place each shelf onto the pins.



Congratulations! Your cabinet assembly is now complete!